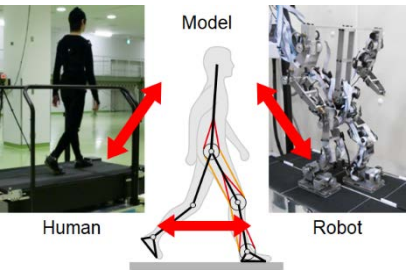


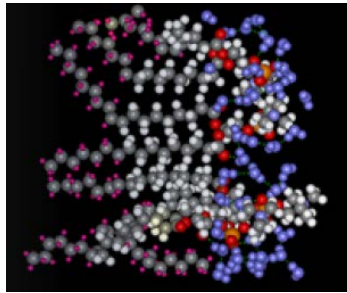
Graduate School of Engineering Science OSAKA UNIVERSITY



Human

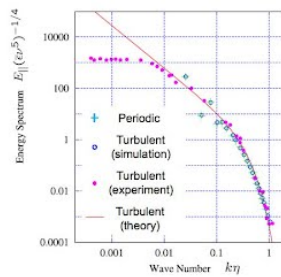
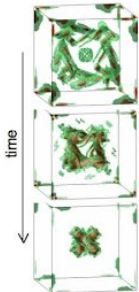
Model

Robot

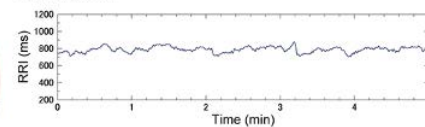


Evolution of vortices

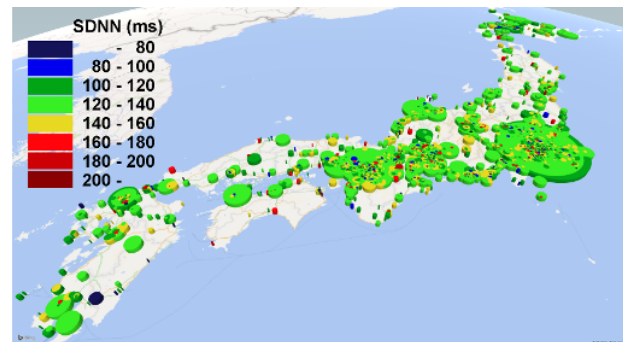
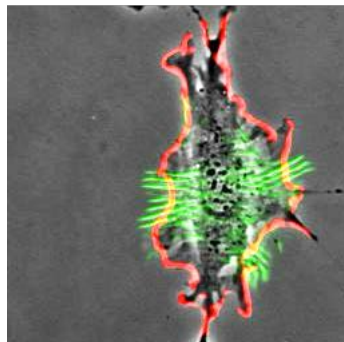
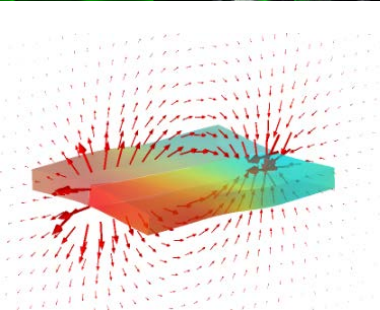
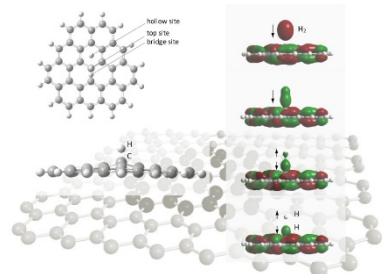
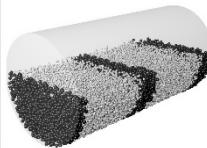
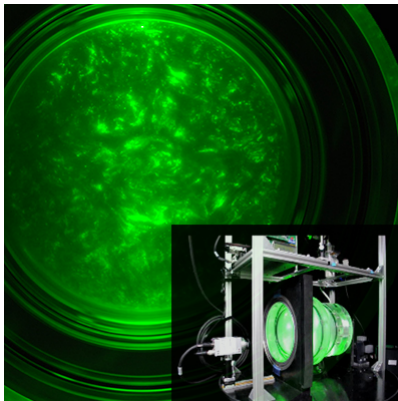
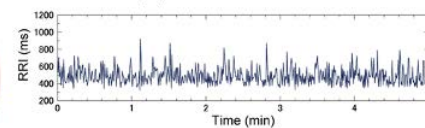
Temporally-averaged energy spectrum



Sinus rhythm



Atrial fibrillation (AF)



Engineering Science for the 21st Century Master's/PhD Program for International Students

The Graduate School of Engineering Science, Osaka University features the following program in English with Japanese Government Scholarship :

◆ Special Training Program for Innovative Bioengineering Scientists: Fusing Physics, Chemistry, and Data Science for Super-Aging Challenge

Number of openings

3 positions for master's course, **5** positions for PhD course

Qualifications of applicants (excerpt)*

(1) Nationality and visa requirement:

Non-Japanese nationals who are expected to obtain a student visa upon enrollment.

(2) Education

A master's course applicant:

who has received a bachelor's degree or is expected to graduate from a university/college prior to the date of enrollment to our master's course.

A PhD course applicant:

who has received a master's degree or is expected to complete a master's course curriculum prior to the date of enrollment to our PhD course.

(3) Language ability: Applicants are required to have sufficient understanding of English.

* For details regarding qualifications of applicants, please refer to the website below.

Screening

The selection will be made based on the application documents and online interviews.

Scholarship benefits (excerpt)

- ◇ Students enrolled in Master's course: 147,000 yen / month.
- ◇ Students enrolled in PhD course : 148,000 yen / month.
- ◇ Tuition fee at Osaka University will be exempt.

Application period

November 1, 2024 to November 15, 2024

Program start date

October 1, 2025

Program website

<https://www.es.osaka-u.ac.jp/en/admission-aid/mext-granted/>



[Further Information]

Contact the Graduate Students Section: ki-daigakuin@office.osaka-u.ac.jp
ES website: <https://www.es.osaka-u.ac.jp/en/>



Graduate School of Engineering Science, Osaka University, Japan